

# Expanded Model Graphics

Model Definitions are used to define the characteristics of all device types at your site.

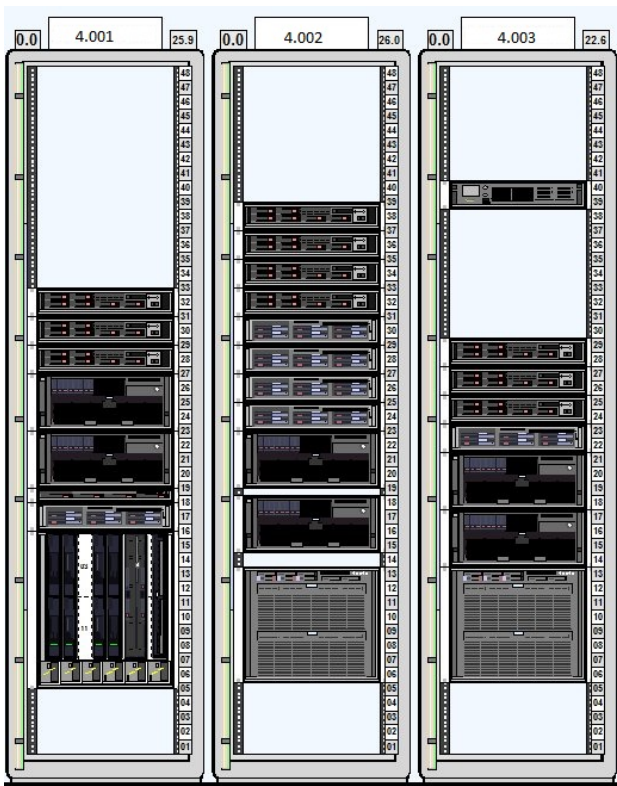
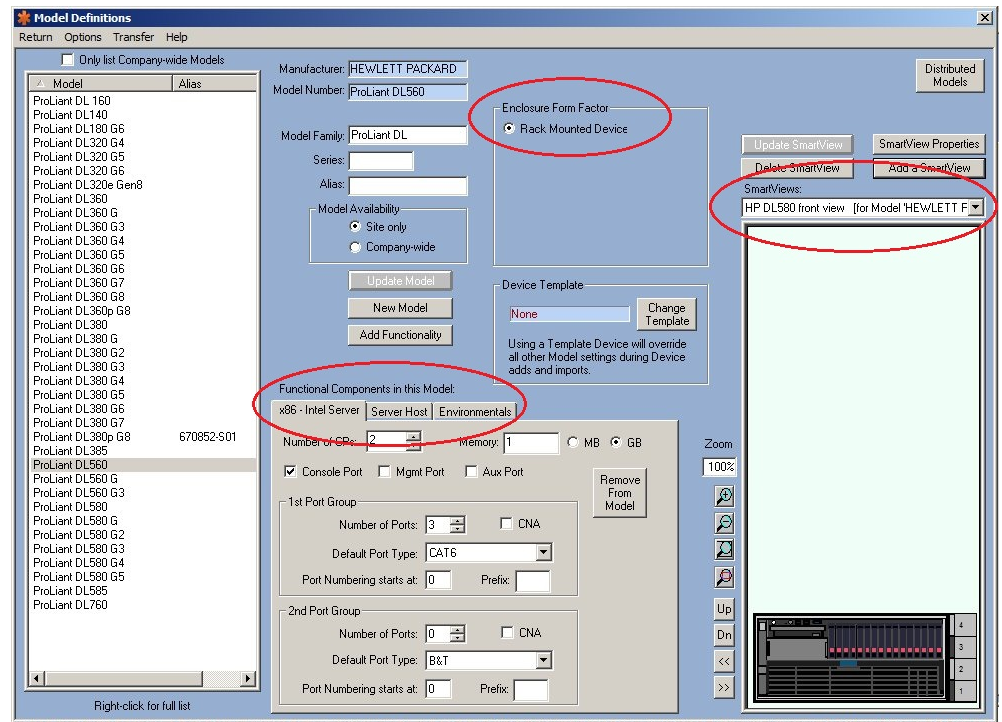
Thousands of model definitions are distributed with OBTAIN.

The definition of a model consists of a:

Form Factor (i.e.: Full Frame, Rack Mounted, Blade/Card);

Functional Nature (i.e.: Application Server, Storage, Switch);

Data connectivity options;



Environmental characteristics; and lastly, a Graphical Representation of the device in the form of a Smart View.

The combination of these properties enables you to accurately record, manage and present your equipment: where it resides, how it's connected to your network, and its impact on your company's capacity to deliver services reliably.

One of the advantages of OBTAIN has always been its capability to enable you to create your own model definitions or modify those distributed as part of the software.

We have expanded this capability by including thousands of the most common equipment definitions along with a growing library of graphical symbols that can be associated with your new or existing equipment.

Alternatively, if a model you require is not included in the distributed models, we would be pleased to create it for you at no charge.

Smart Views can be just a plain graphic symbol, or it can contain an active area within the view.

When the Smart View has an active area you can click one to perform actions, such as inserting/removing cards and blades.

Smart Views bring together the capability of card types, cage types, and graphical symbols to show both the appearance of a piece of equipment and the actions that can be performed in the database.



Smart View - Plain Graphic



Smart View with Active Area