

OBTAIN: Company-Wide Models

What are Company-Wide Models and why were they implemented?

The OBTAIN database is segmented into Sites or Data Centers so that users can better manage locally important assets, connectivity and relationships while maintaining access to enterprise-wide data for entities such as VMs, Applications, Asset Tags and Server Names by logging into any Site.

OBTAIN maintains a set of user defined and predefined equipment Model Definitions. Every Device inventoried within OBTAIN must be associated with a Model Definition. The Model Definition contains technical specifications for the Device along with identifying internal data processing components. The components of a Model tell OBTAIN how the Device is to be used.

Historically, individual Sites/Data Centers wanted to be in control of their equipment Model Definitions. This meant that when a user was logged into a specific Site the only Models that would be available for use were the ones that were created in that same Site. This made sense because different Sites often used different Models of Devices. However, there developed a need for also having Company-wide Model Definitions to standardize how equipment is defined and to share common Model Definitions across all Sites.

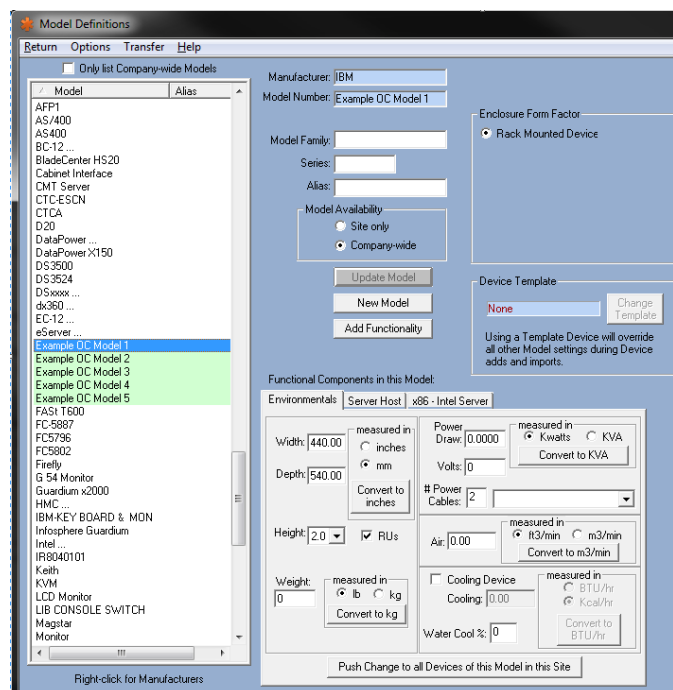
OBTAIN 1.25.1 accommodates both needs. Users can continue to create Site specific equipment Models but are now able to create Company-Wide equipment Models that can be used by all Sites in the database. Now, when a user wants to create or modify a Model Definition they will be presented with the choice to make that Model Site-Only or Company-Wide.

How to discern a Site-Only and Company-Wide Model?

When you start using Company-Wide Models, one of the first things that may come to mind is “How do I tell if a Model is Site-Only or Company-Wide?”.

The difference is simple. Models that are created as Site-Only will be displayed with the typical white background whereas Models that are created as Company-Wide will be highlighted in green for ease of distinction. Additionally, the Model will be identified as Company-Wide on the Model Definitions dialogue in the Model Availability box. (See Figure 1)

All dialogues that list Model names now have a check box that allows you to display only Company-Wide Models to help you find them faster.

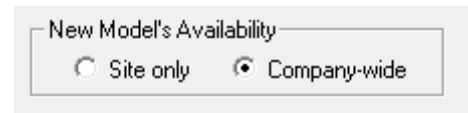


(Figure 1)

How to use Company-Wide Models:

- **Create a new Company-Wide Model of a Model Definition that does not exist in any Site:**

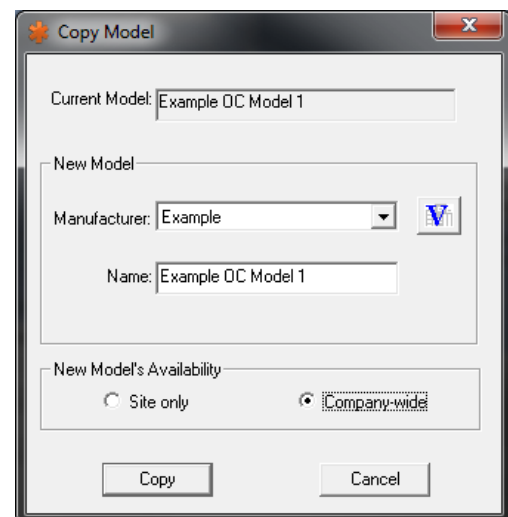
- 1) Navigate to Assets -> Devices -> Models -> Model Definitions.
- 2) Click "New Model".
- 3) Input the information for a brand new Model – or select one of the OBTAIN predefined Distributed Models on the right side of the dialogue and copy it to your Site.
- 4) At the top of the dialogue use the "New Model's Availability" radio buttons to select whether you want the new Model to be Site-Only or Company-Wide. In this scenario choose Company-Wide (See Figure 2). This Model will be accessible and useable in any Site.
- 5) Your newly created Company-Wide Model will now appear in the Models list with a green background.



(Figure 2)

- **Copy A Site-Only Model as a Company-Wide Model:**

- 1) A reason to do this would be, a Site Model Definition is similar to a new required Model Definition that is to be Company-Wide; copy the Site Model to a different Company-Wide Model and the modify the definition. Another scenario is where "Site 1" has "Model A" and that Model is also required in "Site 5"; copy "Site 1's" Model as a Company-Wide Model, then log into "Site 5" and convert the Company-Wide Model to a Site-Only Model.
- 2) Navigate to Assets -> Devices -> Models -> Model Definitions.
- 3) Select the Site-Only Model that you want to copy and make into a Company-Wide Model.
- 4) Click "Options" then "Copy Model".
- 5) From here you can choose to keep the same name or make a different name for the copy.
- 6) At the bottom of the dialogue use the "New Model's Availability" radio buttons and choose the Company-Wide option. (See Figure 3)
- 7) Click "Copy".
- 8) There is now a Company-Wide copy of the Model Definition which will now be accessible and useable in all Sites, or processed further in another Site.

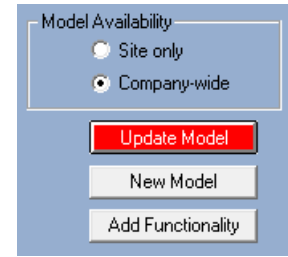


(Figure 3)

- **Convert an existing Site-Only Model to be a Company-Wide Model:**

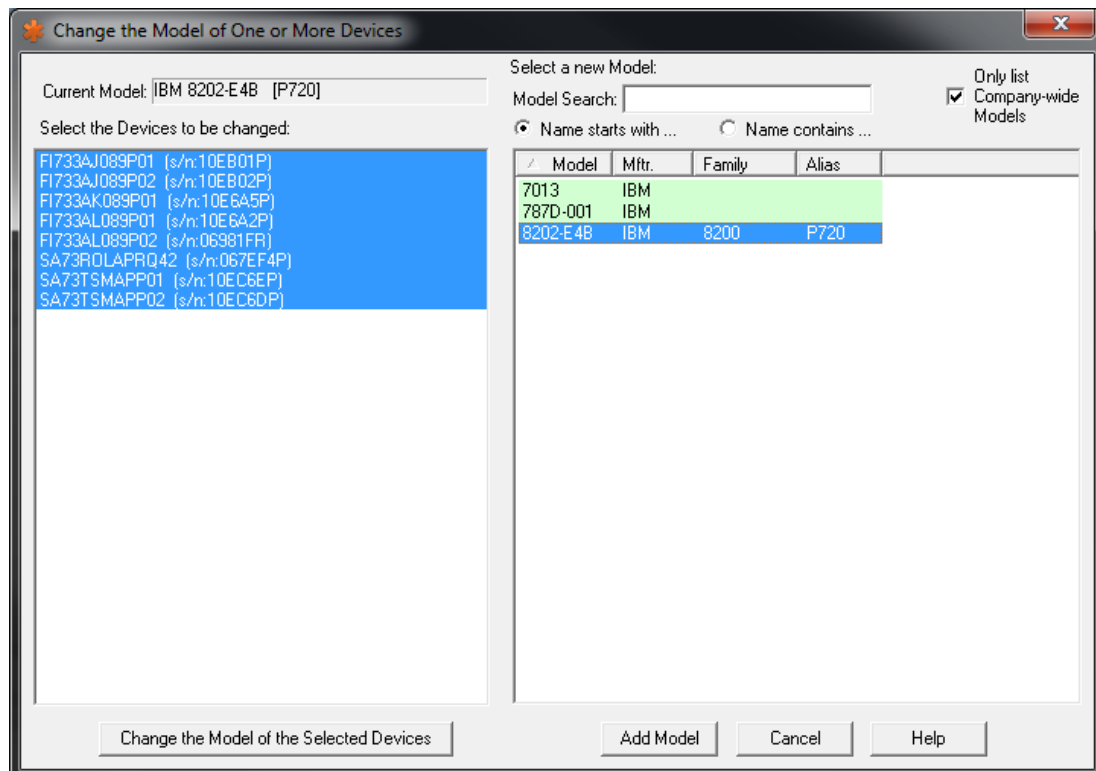
- 1) Navigate to Assets -> Devices -> Models -> Model Definitions.
- 2) Select the Site-Only Model that you want to convert to be a Company-Wide Model.

- 3) In the middle of the dialogue use the “Model Availability” radio buttons to convert the Model from Site-Only to Company-Wide and then click “Update Model”. (See Figure 4.a)



(Figure 4.a)

- 4) The previously Site-Only Model has now been converted to a Company-Wide Model and will now display with a green background in the Models list.
- 5) Additionally, all of the Devices in the current Site that were using the Site-Only Model will now be associated the Company-Wide Model.
- 6) For every other Site that has a similar Model Definition, you must log into the Site and decide whether you want to keep the local Model Definition or use the new Company-Wide Model Definition. If you must keep your Site Model Definition (e.g. specific local configuration) then no further action is required. To convert your Site Devices from a Site-Only Model Definition to a Company-Wide Model Definition, use the “Change the Model of One or More Devices” dialogue. This is accessed by navigating to Assets -> Devices -> Models -> Change Model of Device. Select all Devices of the Model and select the target Company-Wide Model. Then click “Change the Model of the Selected Devices”. The Site-Only Model Definition can then be deleted. (See Figure 4.b)
- 7) Use this same method to convert a Company-Wide Model to a Site-Only Model. However, if a Company-Wide Model is currently being used by one or more Devices in any other Site you will not be able to convert it to be Site-Only – but you could create a Site-Only copy of the Company-Wide Model.



(Figure 4.b)

Possible Scenarios/Q&A:

Q: What happens if I try to delete a Company-Wide Model that is being used by a Device in any Site?

A: You will not be able to delete a Company-Wide Model if it is being used by a Device. On the “Model Definitions” dialogue there will be an “IN USE!!!” box visible if the Model is currently being used by a Device. If this “IN USE!!!” box is visible on a Model you will not be able to delete it.

Q: Is there any reason to use Site-Only Models now?

A: This depends on the users who use the Models to create Devices. If a Model is only used within one Site then it does not have to be made Company-Wide. A user may want to use a Site-Only Model instead of a Company-Wide Model because the local Model is in metric whereas the Company-Wide Model is in imperial. Additionally, two Sites may use the same Model of Device but they could be configured differently (i.e. internal components).

Q: How else can I use Company-Wide Models?

A: Using Company-Wide Models allows you to eliminate duplicate and irrelevant Model Definitions. By navigating to Assets -> Devices -> Models -> Model Definitions -> Transfer -> Model Environmentals Spreadsheet you will see a list of all Model Definitions for a specific Site along with all Company-Wide Model Definitions. The spreadsheet reports the number of Devices for each Model in the Site. By sorting this spreadsheet in different ways, either by name, Model, manufacturer, etc..., you will be able to compare the environmental data of multiple Models side-by-side. This will aid you in finding duplicate Models that have slight differences in the technical specifications or in the Model name, such as using a space instead of a hyphen or the manufacturer being HP vs Hewlett-Packard. (See Figure 5)

Manufacturer	Model	Model Alias	Worksheet Note	Company-wide M...	# Devices in this Site	Primary
IBM	2104-DS4	EXP Plus 320	IBM 2104-DS4	No	1	Disk St
IBM	2105-800	Shark	IBM 2105-800	No	2	Disk St
IBM	2105-800exp	Shark Exp	IBM 2105-800exp	No	2	Disk St
IBM	2105-F20	Shark	IBM 2105-F20	No	0	Disk St
IBM	2105-F20exp	Shark Exp	IBM 2105-F20exp	No	0	Disk St
IBM	2107-921	DS8100 Megamouth	IBM 2107-921	No	3	Disk St
IBM	2107-922	DS8300 Megamouth	IBM 2107-922	No	4	Disk St
IBM	2107-931	DS8100 Megamouth	IBM 2107-931	No	0	Disk St
IBM	2107-932	DS8300 Megamouth	IBM 2107-932	No	1	Disk St
IBM	2107-9A2	DS8300 Megamouth	IBM 2107-9A2	No	1	Disk St
IBM	2107-9B2	DS8300 Megamouth	IBM 2107-9B2	No	0	Disk St
IBM	2107-9E2	DS8300 Megamouth	IBM 2107-9E2	No	1	Disk St
IBM	2109-F16	SAN 16 port 2Gb	IBM 2109-F16	No	37	SAN F...
IBM	2109-F16	SAN 16 port 2Gb	IBM 2109-F16	Yes	0	SAN F...
IBM	2109-F32	SAN 32 port 2Gb	IBM 2109-F32	No	40	Disk St
IBM	2109-M12	SAN 128 port 2Gb	IBM 2109-M12	No	3	Tape S...
IBM	2109-M48	SAN 384 port 4/8Gb	IBM 2109-M48	No	0	FICON
IBM	2109-S08	SAN 8 port 1Gb	IBM 2109-S08	No	1	SAN F...
IBM	2109-S16	SAN 16 port 1Gb	IBM 2109-S16	No	0	SAN F...
IBM	2145		IBM 2145	No	8	Intel A...
IBM	2145-8A4	SAN Vol Ctr	IBM 2145-8A4	No	2	Disk St
IBM	2145-8F4	SAN Vol Ctr	IBM 2145-8F4	No	6	Disk St
IBM	2145-8G4	SAN Vol Ctr	IBM 2145-8G4	No	4	Disk St

(Figure 5)