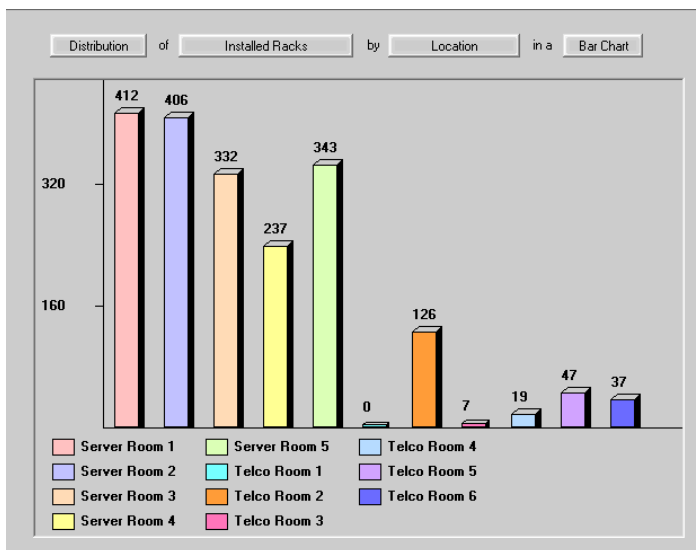


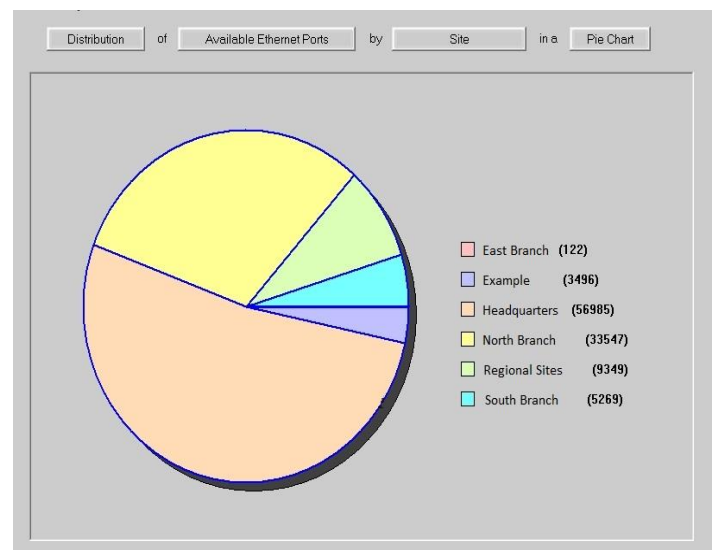
# OBTAIN 1.25.2 - Charting

## What is Charting?

The primary goal of release 1.25.2 is to give users the ability to graphically display metrics that OBTAIN gathers in their database. This is accomplished with OBTAIN's new Charting feature. Many OBTAIN customers export metrics to 3<sup>rd</sup> party tools such as corporate dashboards. Now users will have the ability to also display that information directly within OBTAIN itself. With Charting, users will be able to display the Distribution, Status and Trend of a variety of metrics. Examples of displayable metrics are number of installed Ethernet/SAN ports, number of free Ethernet/SAN ports, number of installed racks, number of installed and stranded RUs and many more.



(Figure 1)



(Figure 2)

Upon login, users will be presented with the new user interface. The left side of the window will contain the functionality from the previous user interface, i.e. asset searching, Sites, Workorders, Nexus and Workflow. The top navigational toolbar will also remain unchanged from the previous version. The focus of the new user interface will be the right side of the dialogue where the new Charting feature will be located. The new Charting area is where users will be able to produce various types of charts to graphically display metrics from their database.

Upon first login, after upgrading to 1.25.2, the charting section will display a blank chart indicating that no metrics have been chosen to be displayed. However, after creating a chart for the first time, whenever a user logs out and back in the Charting section will display the chart they were viewing at the time of their logout.

## **Charting User Interface:**

Users will be able to create a variety of different charts by selecting a combination of Type of Information, Type of Metric, Scope and Type of Chart. The top of the charting dialogue is where users will select the options for the chart they wish to display. The options that users will have to choose from are as below. (See Figure 3, Page 3)

### **Option #1)** Type of Information to Display:

There are three types of information that users can choose from:

**Distribution:** This option will allow users to display the value of specific metrics in a chart as they are documented in the database at the present time. An example of this would be, wanting to know how many installed Ethernet ports there are in each of the Sites in the database, at present time.

**Status:** This option will allow users to produce a bar chart that will simply show them the overall count for a specific type of metric for the entire Organization, as opposed to a specific Site or Location.

**Trend:** This option will allow users to chart the growth and/or decline of specific metrics. An example of this would be, wanting to know the growth and/or decline of RU consumption since their OBTAIN database was created.

### **Option #2)** Type of Metric to Display:

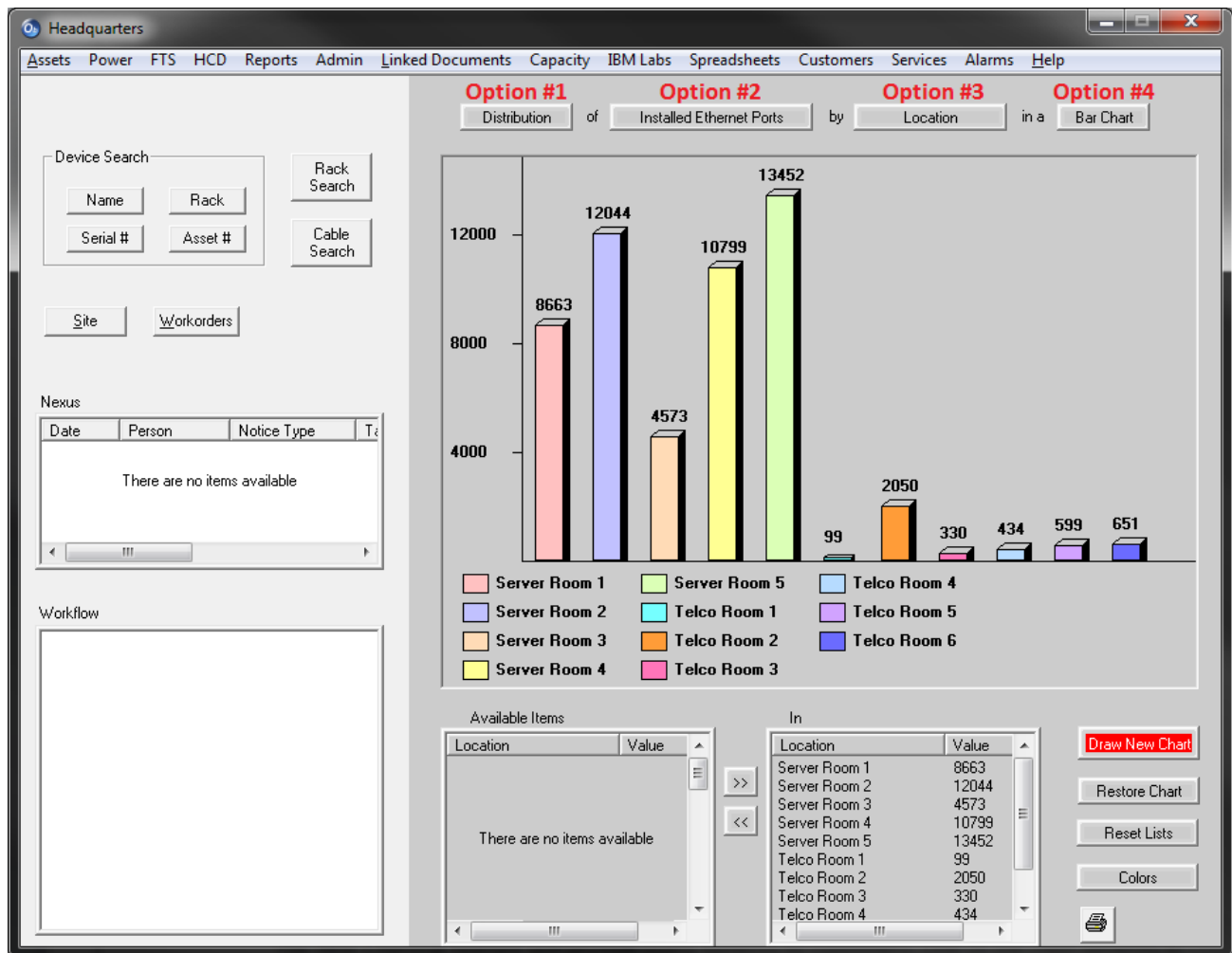
Depending on which “Type of Information” was selected the second option will contain a list of possible metrics that can be chosen. Examples of possible metrics would be Available/Installed/Used Ethernet and SAN ports, Available and Used Floor Space, Power Draw, Number of Racks, Consumed RUs and many others. The choice made in Option #2 will affect the choices that are available when moving to Option #3.

### **Option #3)** Scope/How to sort the data:

Option #3 is where the scope of the chart is selected. This choice will determine where OBTAIN grabs the metric data from, to be displayed. An example of this would be, wanting to display a chart of the Distribution of Installed Ethernet Ports and choosing whether to display the information by Location or Site. If Location was selected then the chart would display the number of installed Ethernet ports in each Location of the database. Whereas, if Site was selected then it would display the number of installed Ethernet ports in each Site.

### **Option #4)** Type of Chart:

Option #4 is where the user decides what type of chart they want their metric data to be displayed in. The available types of charts to select from will vary depending on the choices made in the first three options. The possible charts types that would be available to display are Bar, Stacked Bar, Pie and Line.



(Figure 3)

### **How is Charting Beneficial?**

The new Charting feature will provide many benefits to customers. One of the main benefits is that charts can be created directly in OBTAIn. This means that users will not have to manually sort through data in OBTAIn and then create a chart using a separate program. Users can simply select the type of metric they wish to display in a chart and OBTAIn will now grab that information from the database, automatically, and display it in the chosen chart type.

Another benefit is the upgrade to the OBTAIn visuals. The Charting feature brings a visual appeal that users have said OBTAIn lacks, in the past. Now, instead of only being able to show superiors and colleagues textual spreadsheets from OBTAIn they will now be able to show them a variety of clear and concise charts that graphically display the information they are looking for.

In addition, being able to generate charts directly in OBTAIn will make it much easier for users to present information from OBTAIn, in general. If a superior or colleague wants to see information on a specific metric it is unlikely that they want to read through 20 page report or scan through multiple spreadsheets to find what they are looking for. What they want is to be able to look at something and instantly get the information or answer they are looking for. Charting is an excellent solution to this issue because it provides various visuals which encompass the data from an entire report/spreadsheet and display it in a single image that can immediately get a point or set of information across when viewed.